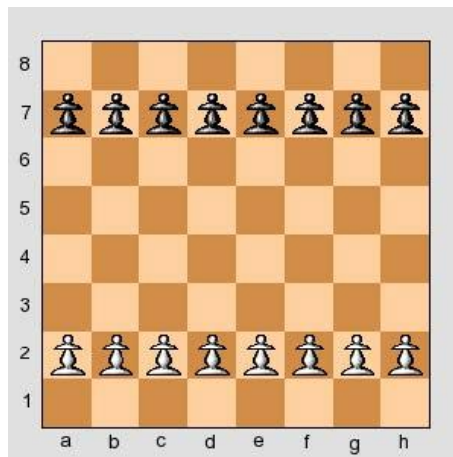


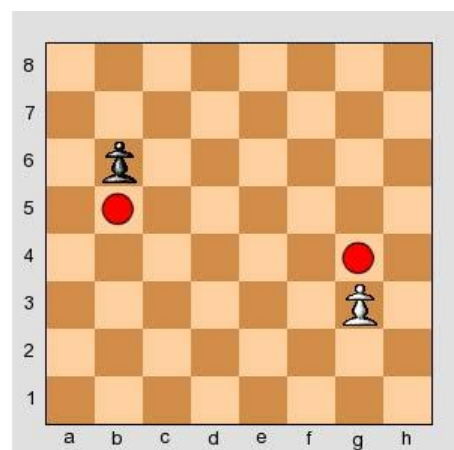
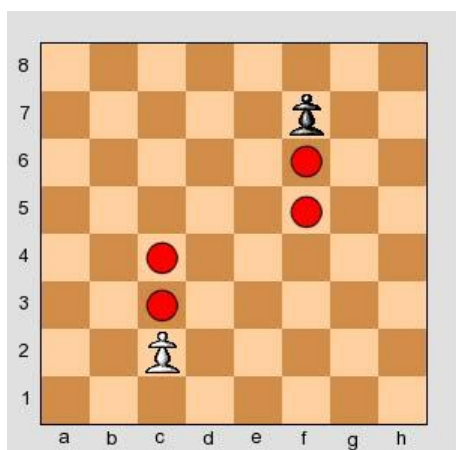
CSC Curriculum – Term One Handouts

Core Lesson 1 Handout

THE PAWN MOVE



Each player has 8 pawns. This is where they start.

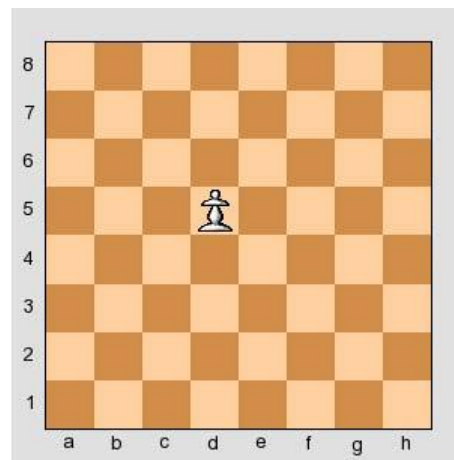
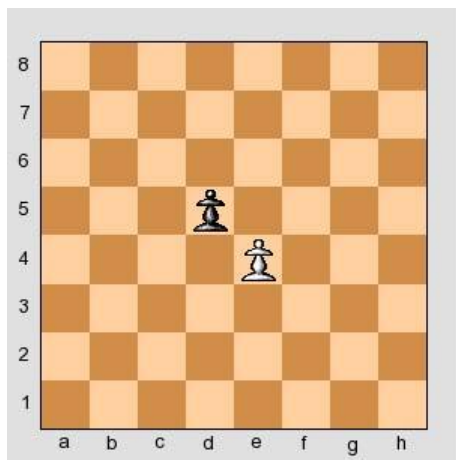


On its first move a pawn can move one or two squares forward. After its first move it can only move one square forward.

CSC Curriculum – Term One Handouts

THE PAWN CAPTURE

Pawns can make captures by moving one square diagonally forward.



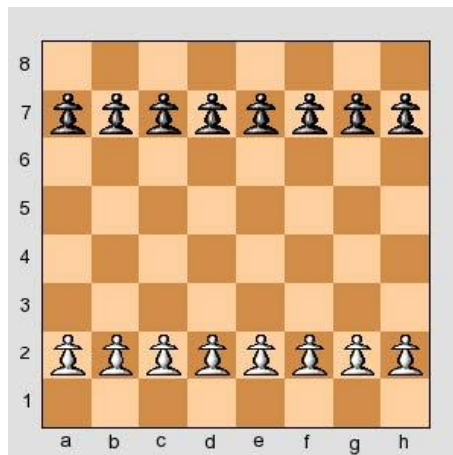
In the first diagram it's White's move. His pawn can capture the black pawn.

The second diagram is the position after White has captured the black pawn.

When you capture a piece your piece takes its place and the enemy piece is taken off the board.

CSC Curriculum – Term One Handouts

THE PAWN GAME



This is a game you can play with pawns. You start from this position. Here are the rules:

1. White plays the first move
2. The players take it in turns to move
3. You win if you get a pawn to the end of the board
4. You win if you take all the enemy pawns
5. You win if your opponent cannot make a move